



## Matterport Property Report

### 24 Pitkin Street

Indoor Scanned Area 1,127 sq. ft.

Sizes and dimensions are approximate; actual may vary

## Description

24 Pitkin Street 360 Virtual Tour

## Indoor Dimensions

Room	Dimensions	Ceiling Height	Area	Floor
<b>Floor 1</b>	–	–	<b>654 sq. ft.</b>	–
Bathroom	7' 3" × 3' 2"	8' 9"	23 sq. ft.	Floor 1
Dining Room	11' 6" × 12' 1"	9' 2"	139 sq. ft.	Floor 1
Entrance	11' 7" × 3' 6"	47' 2"	41 sq. ft.	Floor 1
Kitchen	N/A	7' 11"	158 sq. ft.	Floor 1
Living Room	N/A	8' 8"	127 sq. ft.	Floor 1
Living Room	11' 7" × 11' 6"	8' 11"	133 sq. ft.	Floor 1
Staircase	7' 3" × 3' 0"	15' 9"	22 sq. ft.	Floor 1
Staircase	N/A	8' 10"	12 sq. ft.	Floor 1
<b>Floor 2</b>	–	–	<b>473 sq. ft.</b>	–
Bedroom	11' 6" × 15' 5"	7' 11"	177 sq. ft.	Floor 2
Bedroom	11' 6" × 8' 4"	8' 0"	96 sq. ft.	Floor 2
Hallway	N/A	7' 11"	103 sq. ft.	Floor 2
Office	11' 6" × 8' 4"	8' 1"	97 sq. ft.	Floor 2

Indoor Property Totals

-

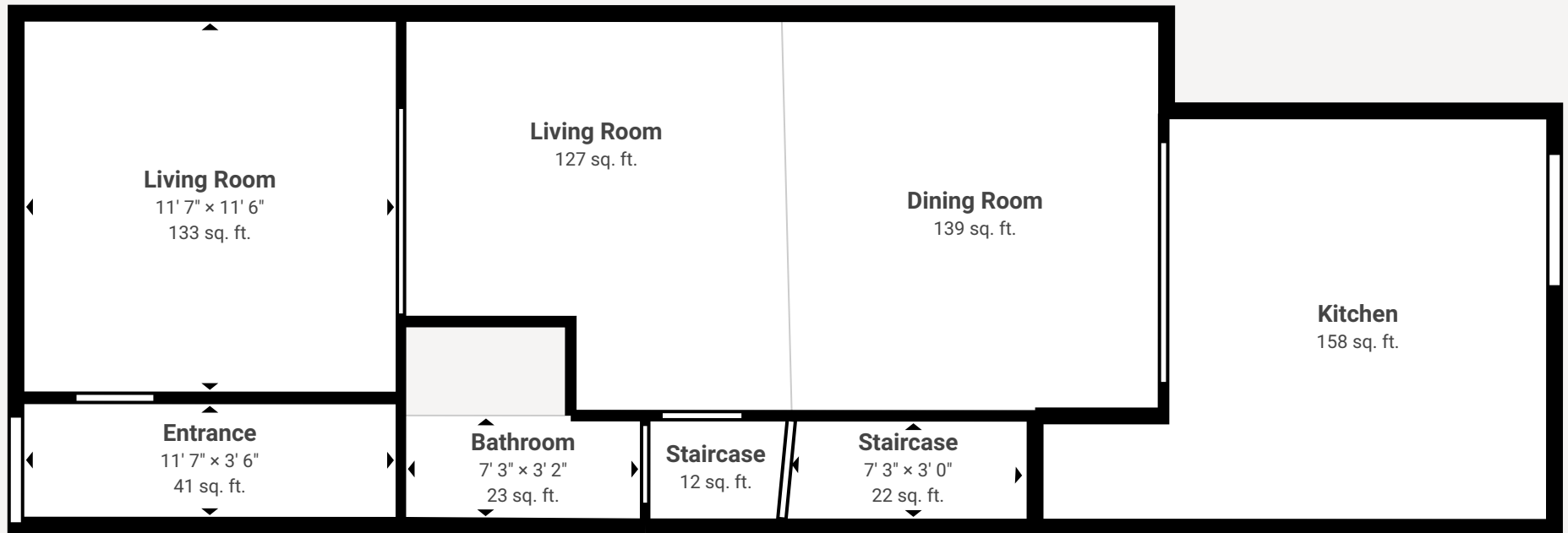
-

1,127 sq. ft.

-

## Layout

### Floor 1



Floor 2

